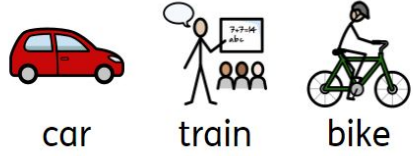


How do you travel to school?

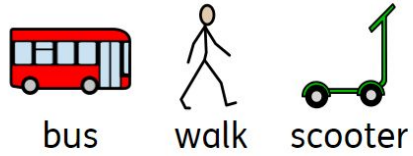
How do you journey to school?

Human and Physical Features

How would you travel from Africa to England?



car train bike



bus walk scooter



map



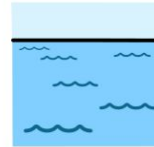
Vocabulary



wood



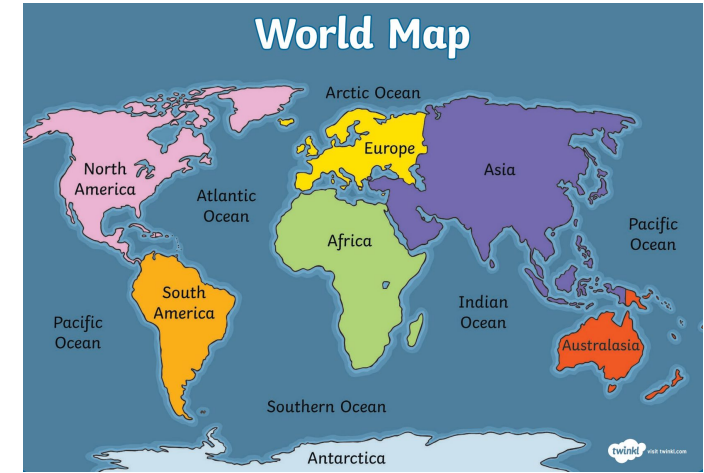
river



sea

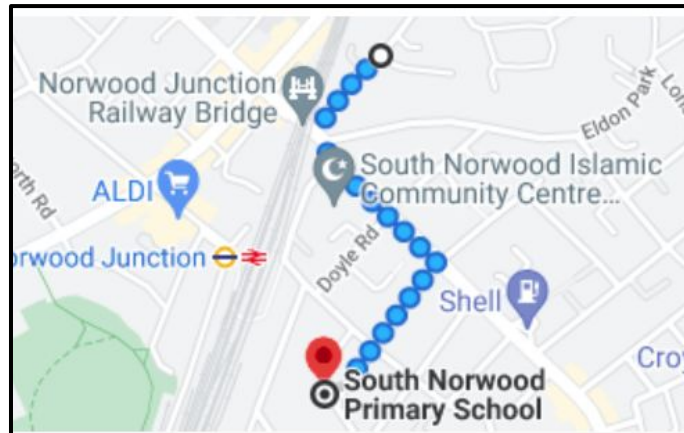


park

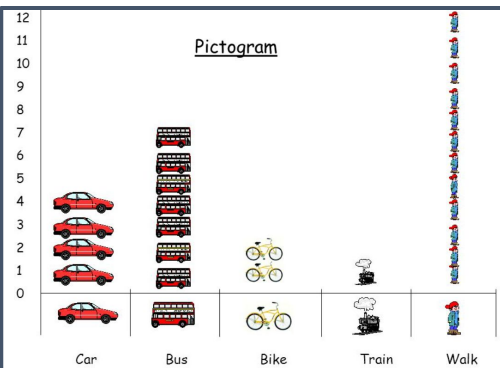


World Map

A pictogram shows the most popular way to travel to school.



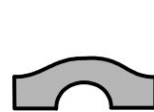
Types of Transport



house



street



bridge



monument



transport



bike



car



bus



plane



boat

History: what was transport like 100 years ago?

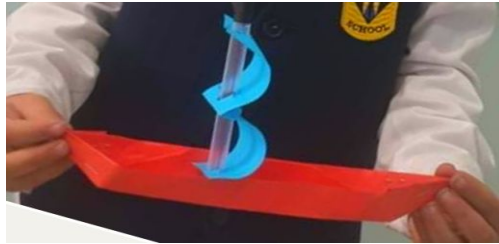


steam train



penny farthing

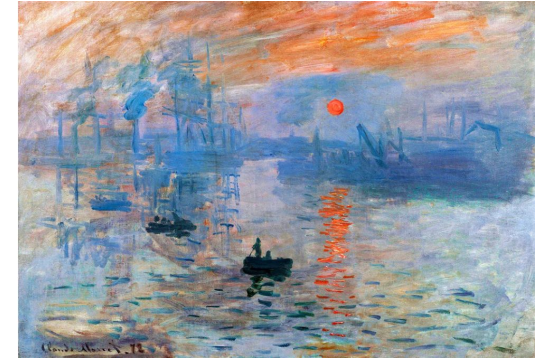
DT: Make a boat which floats on a lake



DT: Make a moving vehicle for a mini figure



Art - Impressionism



Science: Can you make a helicopter that is the slowest to reach the ground?



helicopter



wings

Computing - Bee Bots

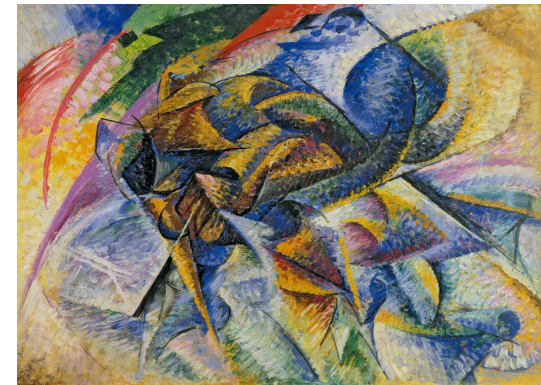


go



beebot

Art - futuristic paintings



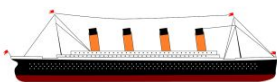
car



biplane



cadillac



Titanic



forward



left

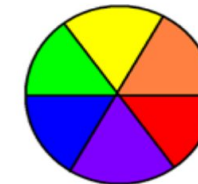


right

Air resistance is a frictional force that air pushes against a moving object.



air resistance



Art - Colour wheel

End of unit knowledge assessment

- From A to B

Name three different types of transport?

Name 3 human features

Name 3 physical features

Draw a birds eye view of your desk.

What are the four points on a compass?